



JCPenney

Custom

Faux

Wood

Blind

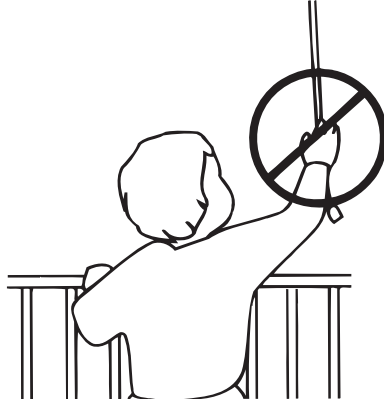
owner's handbook





WARNING

Cords and bead chains can loop around a child's neck and strangle.



- Always keep cords and bead chains out of children's reach.
- Move furniture away from cords and bead chains. Children can climb furniture to get to cords.
- Do not tie cords together. Make sure cords do not twist together and create a loop.

INSTALLATION INSTRUCTIONS

Step 1. Check Package Contents

Missing part? Call 800-933-7115

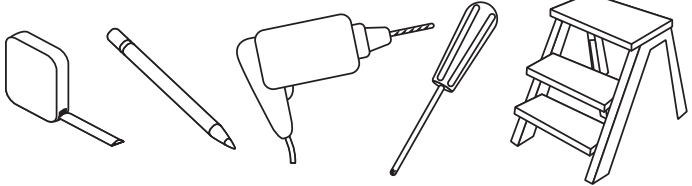
Mounting hardware kit includes the following:

Part		Quantity
a	Mounting Bracket	2 (blinds 12" to 26" wide) 3 (blinds 26" to 47" wide) 4 (blinds 48" to 62" wide) 5 (blinds 62" to 78" wide)
b	1 $\frac{1}{8}$ " Screws	4 per bracket
c	Hold Down Bracket	2
d	$\frac{1}{2}$ " Screws	4

Note: one extra screw of each noted size is included for convenience

Step 2. Tools required

Screwdriver, tape measure, pencil, drill, step ladder.



Note: use #6 plastic anchors for dry wall or plaster mounting (not included)
Use a 3/32" drill bit to predrill screw holes. Use a 1/4" drill bit for wall anchors.

Step 3. Bracket Location and Installation

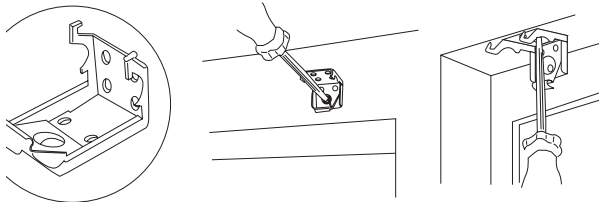
Your blind may be installed either inside the window frame or outside the window frame. A mounting bracket should be positioned about 2" to 6" from each end of the head rail. For wider shades that require 3 or more brackets, these should be spaced evenly between the two outermost brackets. Always position the brackets such that there is no interference with the cord lock or tilter mechanism. The procedure outlined below will assure proper bracket placement.

For Outside Mounting:

Clip the brackets onto the head rail as described above. Hold the blind level at the height desired and center it over the window opening. Mark the exact location of each bracket with a pencil. Remove the brackets from the head rail and position the top of each bracket at the marked location and screw each bracket into the wall or window molding using the 1 $\frac{1}{8}$ " screws, predrill the screw holes using a 3/32" drill bit.

For inside mounting:

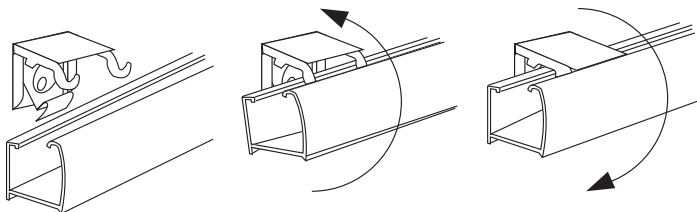
Clip the brackets onto the head rail as described above. Hold the blind in place and make a pencil mark at the rear of each bracket where it contacts the inside of the window frame. Remove the brackets from the head rail and align them with the marks. Attach each bracket using the 1 $\frac{1}{8}$ " screws, predrill the screw holes using a



3/32" drill bit. If you purchased the optional Deluxe Valance, place the Valance Clips on the head rail before attaching the head rail to the brackets – see Step 4A below.

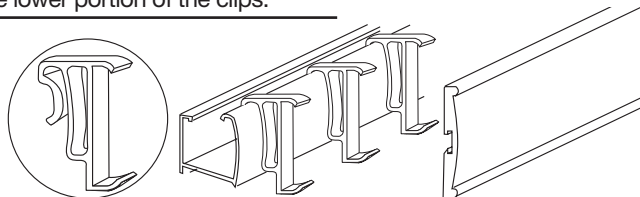
Step 4. Securing the Head Rail

Lift the head rail into position such that the front edge of each bracket is under the inner front edge of the head rail (see illustration). Push the head rail upward until the flexible tab at the bottom of each bracket snaps onto the back of the head rail. Check carefully to assure that each bracket is properly secured.

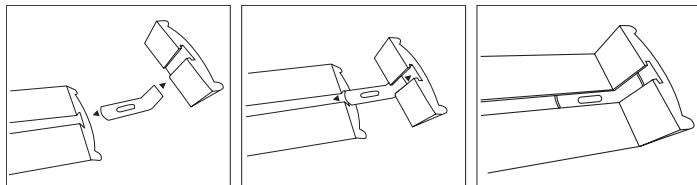


Step 4A. Installation of Optional Deluxe Valance

Place the valance clips on the head rail. Align the top of the valance with the top of the clips – press the valance inward until it snaps into the lower portion of the clips.



Outside Mount Blinds include Valance Returns, which must be assembled as illustrated.



Step 5. How to Operate

Tilting:

For blinds with a Wand Tilter – rotate the wand to attain desired slat positioning.

For blinds with a Cord tilter – pull the tilt cords to adjust slat position.

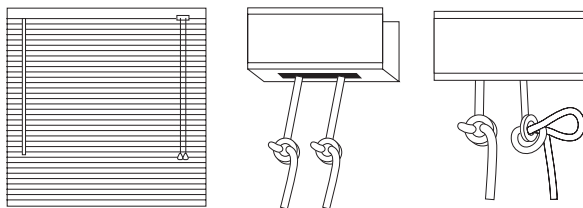
Always rotate the slats to the “open” horizontal position before raising or lowering. This assures smooth operation and increases the life of the blind.

To lower blind: move cord to the left while pulling down gently until cord lock releases – allow cord to slip through fingers until blind reaches desired level – move pull cord to the right and release – blind will lock automatically.

To raise blind: pull cord downward slowly until blind reaches desired height – release cord and blind locks automatically

Step 6. Adjust Safety Cord Stops

REDUCE RISK OF STRANGULATION TO INFANTS AND TODDLERS.
POSITION SAFETY CORD STOPS BEFORE USING BLINDS.

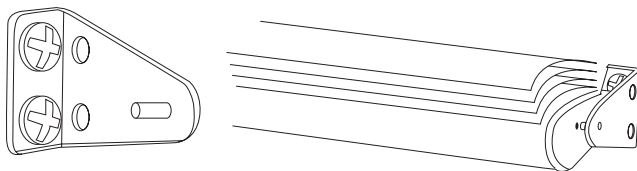


Fully lower blind and lock into place. Measure the distance from head rail to cord stops. If cord stops are 1 to 2" below the head rail, no further adjustment is needed. If not, loosen but do not untie the knot surrounding the cord stop. Move the cord stop as close to the head rail as possible and tighten knot by pulling firmly on tassel. Repeat process for each lift cord.

Step 8. Installing Hold Down Brackets

Hold down brackets are provided for optional use. These brackets should be used only if the blind is to be in a permanently lowered position.

With the blind fully lowered, make pencil marks at the outside ends of the bottom rail. The outside edge of each bracket should be lined up to the pencil marks and screwed into place using the ½" screws. Insert the pins protruding from the brackets into the holes on both ends of the bottom rail (see illustration).



Cleaning your Blinds

Dusting: use a soft cloth, feather duster, cylindrical dust brushes specifically designed for blinds or vacuum using the soft brush attachment.

Washing: use a cloth, sponge or soft brush and a mild detergent.

Use warm or cold water, not hot water. Place toweling on the floor and/or window sill and wash the blind in sections. Smaller blinds can be washed in a sink or tub; blinds can also be gently hose washed outdoors. Rinse off suds thoroughly. Drain the head rail and bottom rail; remove end caps if necessary. Towel dry to avoid water marks.

To have your blinds cleaned professionally, check the local telephone directory for a Venetian blind cleaning service or laundry.

Cloth tapes – spot clean with a fabric cleaner – test an inconspicuous area (such as the back or bottom of the blind) before proceeding

Polyester ladder tapes can be cleaned with distilled water and a clean cloth.

REPLACEMENT PARTS

In the event that replacement parts are ever needed, you may call: 1-800-933-7115

Please be sure to provide the following information, if possible:

- The complete model or catalog number of your product
- A description of the product
- A description of the part needed

ONE YEAR LIMITED WARRANTY

The enclosed product is warranted to the original residential retail purchaser as long as the product remains in the original window.

Covered:

Lifetime: Entire product against manufacturing defects (i.e. a flaw in the product design, materials, or workmanship that causes the product to no longer function)

3 years: Cords including internal cords such as those found in cordless blinds. 5 years: All fabric

Not Covered:

Normal Wear and Tear

Any product that fails due to: abuse • exposure to salt air • improper installation • accident • extraordinary use • improper operation • alterations • improper cleaning • misapplication • damage from pests/insects/pets • improper handling • misuse

Natural wood products that have: loss of color intensity • yellowing or cracking of plastic parts or foam wood product • variations in color, grain, or texture • warping of wood slats in high humidity areas

Costs associated with: product removal • transportation to and from the retailer • brand label removal • product remeasure • incidental or consequential damages • product reinstallation • shipping

In the event there are multiple blinds/shades in the same room, only the defective blind/shade will be replaced.

To Report Shipping Damage:

If damage occurred during shipping, call place of purchase and report within 7 calendar days or else you may be denied credit for your damaged product.

To Obtain Service:

If you suspect this Phase II product has a manufacturing defect in materials or workmanship:

1. Locate the sales receipt
2. Call place of purchase

Any unauthorized returns will not be accepted.

Warranty Remedy:

THIS SHALL BE YOUR SOLE REMEDY UNDER THIS LIMITED WARRANTY.

If this product is found to have a manufacturing defect in materials or workmanship, we will (at our discretion) do one of the following: repair the product • replace the product • refund the cost of the product

Colors vary from lot to lot and may not exactly match sample swatch or previous purchases. Discontinued items or color selections will be replaced with the closest equivalent current product.

YOUR RIGHTS UNDER STATE LAW:

This lifetime limited warranty gives you specific legal rights, and you may have other rights, which vary from state to state. Some states do not allow limitations on how long a warranty lasts, so the above limitations may not apply to you.

No agent, representative, dealer, or unauthorized employee has the authority to increase or alter the obligation of this warranty. This lifetime limited warranty supersedes any previous versions.