



**Custom**  

---

**Roman**Style  

---

**Fabric****Shade**  
owner's handbook







**WARNING**



Custom  
**Roman**  
Shade



## INSTALLATION INSTRUCTIONS

### Step 1. Check Package Contents

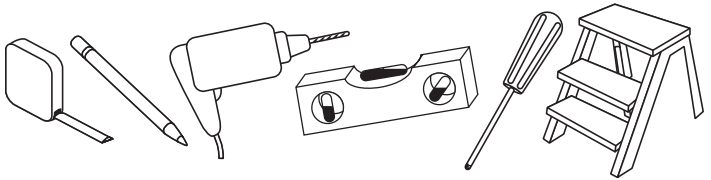
Missing part? Call 800-264-1190

Mounting hardware kit includes the following:

Part	Quantity
a. Mounting Brackets	2 (shades up to 36" wide) 3 (shades 36" to 48" wide) 4 (shades 48" to 96" wide)
<b>Note: brackets are for Outside Mount installations only!</b>	
b. 1-1/2" & 2" Screws	2 (shades up to 36" wide) 3 (shades 36" to 48" wide) 4 (shades 48" to 96" wide)
c. 3/4" Screws	2 (shades up to 36" wide) 3 (shades 36" to 48" wide) 4 (shades 48" to 96" wide)

**Note:** 3/4" & 1-1/2" & screws are for Outside Mount installations only ; 2" screws are for Inside Mount installations only

### Step 2. Tools Required



Pencil, tape measure, level, screw driver, step stool, drill.

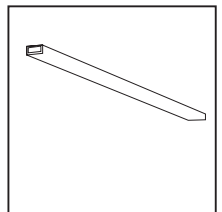
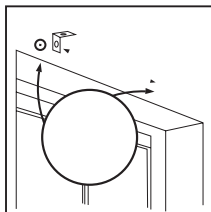
### Step 3. Installation

Wallboard or Plaster: use anchors specifically designed for hollow walls (not included).

Concrete, Stone, Brick: use a masonry drill bit and anchors or screws specifically designed for masonry (not included).

#### For Outside Mounting:

One bracket should be positioned about 2" to 6" from each end of the head rail. For wider shades that require 3 or 4 brackets, these should be spaced evenly between the two outermost brackets. The brackets must not interfere with the cord guides or cord lock or in any way impede the movement of the lift cords – therefore, we recommend that you hold the shade in place and mark the desired bracket locations with a pencil.



The brackets must be level – use a Spirit Level if necessary to assure proper alignment.

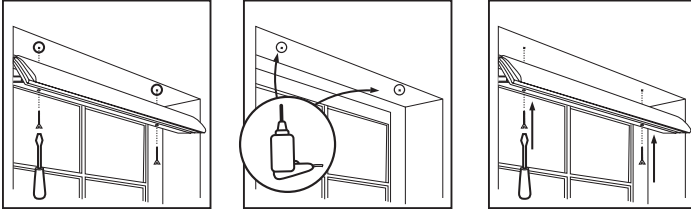
Pre-drill the mounting holes using a 5/64” drill bit, then screw the brackets in place.

Place the head rail on top of the brackets – center the shade over the window opening – then mark the location of each mounting hole on the head rail. Pierce the fabric at the hole locations using the tip of a screw, then pre-drill the mounting holes using a 5/64” drill bit. Attach the shade to the brackets using the 3/4” screws provided.

**For Inside Mounting:**

Mounting holes are pre-drilled in the Head Rail. Screw the 1-1/4” screws into the head rail until the tips of the screws extend very slightly beyond the top of the head rail. Align the front of the shade with the front edge of the window opening (or position as desired), making sure that the shade is centered in the window opening – then push up on the head rail so that the screw heads leave tiny impressions in the top of the window frame.

Now, use the impressions as a guide and pre-drill the mounting holes using a 5/64” drill bit – then screw the shade in place.



**Step 4.** How to Operate

To raise or lower the shade, pull the lift cord slightly to release the cord lock. Adjust the shade to the desired height, then move the lift cords slightly toward the outside of the shade to lock in place.

**CLEANING**

To clean the shade fabric, use a feather duster or vacuum lightly using the soft brush or upholstery attachment. For more extensive cleaning, please locate a professional drapery cleaning service.

## REPLACEMENT PARTS

In the event that replacement parts are ever needed,  
you may call: 1-800-264-1190

Please be sure to provide the following information, if possible:

- The complete model or catalog number of your product
- A description of the product
- A description of the part needed